

Quick Card – SCU-1800 Options



The following procedures will show user the what options the SCU-1800 have installed and how to deploy an option

Prerequisite

Please Review SCU-1800 Getting Started Guide

<https://velocity.viavisolutions.com/docs/DOC-7516>

System Requirements

- SCU-1800
- 48V DC supply
- 10/100 BaseT Ethernet connection with static IP

Log In

Enter IP address in URL of a Browser

Default User Name = scuadmin
Default Password = scuadmin

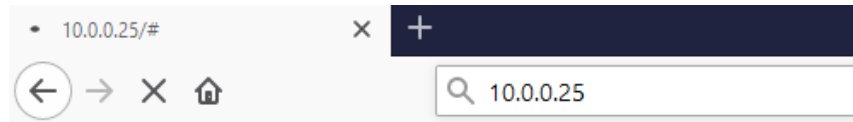


Figure 1: Enter IP Address in Web Browser

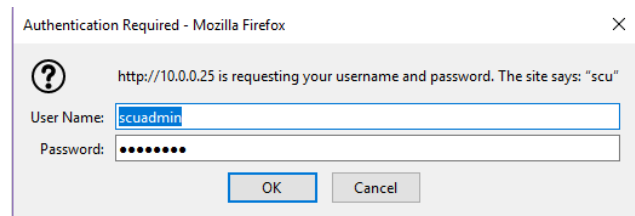


Figure 2: Enter User Name and Password

SCU Options

SCU-1800 Forward Sweep Option

- Allows Forward Sweep from 42 MHZ to 1218 with ONX630 and DSAM 6300
- Replaces the SDA 5500

SCU-1800 Reverse Sweep Single User

- Allows Single Return Sweep from 4 MHZ to 204 with ONX630 and DSAM 6300
- Replaces the SDA 5500

SCU-1800 Enable 16 Port Reverse Sweep

- Allows Single Return Sweep from 4 MHZ to 204 with ONX630 and DSAM 6300 on all 16 ports.

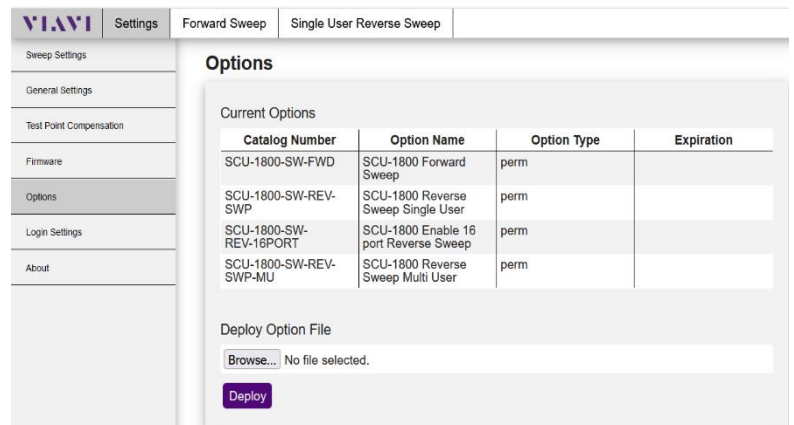


Figure 3: Options List

SCU-1800 Reverse Sweep Multiple User

- Allows Up to 10 Return Sweep
- Users from 4 MHz to 204 with ONX630
- and DSAM 6300 on all 16 ports
- Replaces the SDA 5510

Flex Option

- If the SCU-1800 has the following options:
- SCU-1800 Forward Sweep Option
- SCU-1800 Reverse Sweep Multiple User

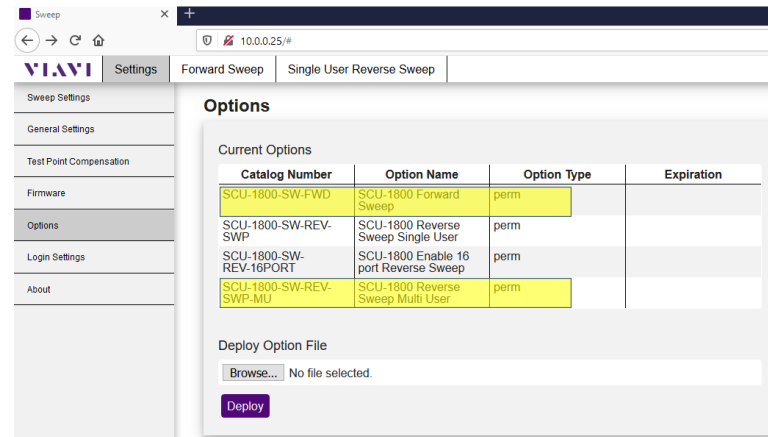


Figure 4: Flex options

Demo Mode

- General Settings
 - The user can change the SCU-1800 under the Demo Mode in the General Settings tab to be a Forward Sweep with a single user return sweep like the SDA 5500 or user can change to a Multiple User Reverse like the SDA 5510

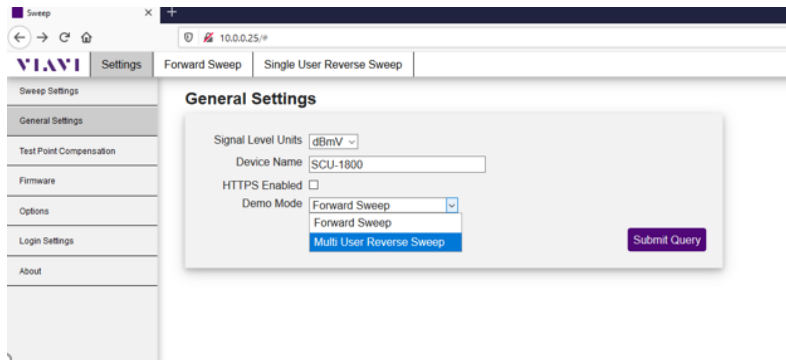


Figure 5: Changing the Mode

Deploy Options

- Options Menu
 - Press the Browse button to select an option file and then the open button then select Deploy.
 - Note: this may be sent by email on a USB
 - Turn off unit then turn on unit
 - The unit should now show the option in the options menu.

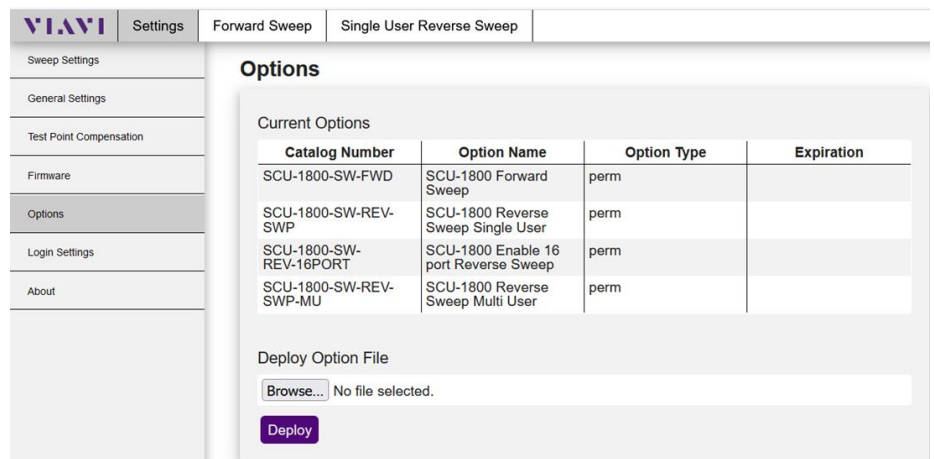


Figure6: Deploying new option